

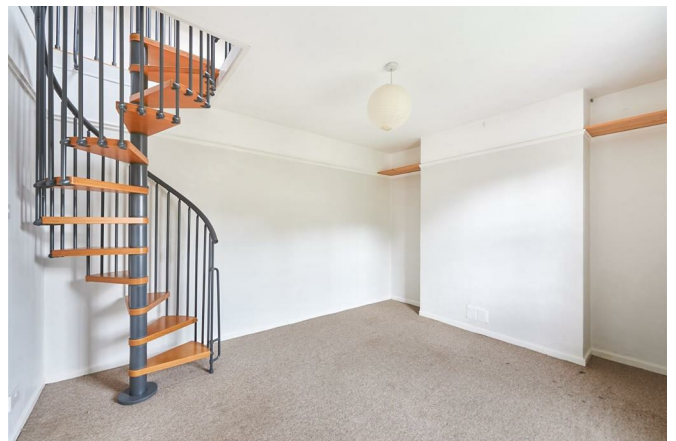


LOWER OLDFIELD PARK, BATH

£1,000 PCM

1 BED FLAT - THIRD FLOOR, UNFURNISHED

- One bedroom apartment
- Split level accommodation
- Oldfield Park
- Lovely Views
- Unfurnished
- Council Tax Band A

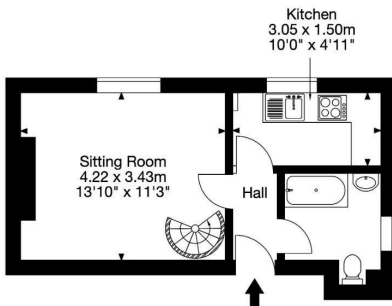


Zest are delighted to offer this split level one bedroom apartment on the top floor of this bath stone period conversion.

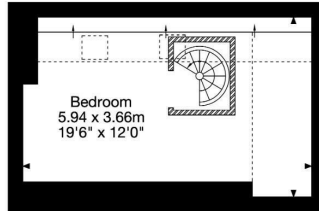
The accommodation comprises one double bedroom on the top floor of the apartment which is accessible via a spiral staircase, a white fitted bathroom, a spacious sitting room with large windows and a fitted kitchen. Located on the second floor off the grand communal hallway.

The property benefits from light spacious rooms and lovely views. The property is unfurnished but a bed is provided.

Top Floor Flat,
17 Lower Oldfield Park,
Bath BA2 3HL
Gross Internal Area
499 Sq Ft - 46 Sq M



Second Floor



Third Floor

Copyright © 2019 Zest New Lets. All rights reserved.
All measurements are approximate and should be used as a guide only. Please refer to the floor plan for more details.

Capture.



APPLICANT GUIDE:

1. View the property or arrange for a representative you trust to view it for you.
2. If you would like to take the property make an offer by completing the "Tenant Application Form" given to you at the time of viewing and either drop off at the office or send a copy via email to happytohelp@zestlovesproperty.com
3. Once your offer has been put forward to the landlord and they have accepted your application you will be required to pay the Holding Fee of 1 weeks rent and complete and submit our Tenant Terms of Business (where you will also be required to upload proof of identity). This then secures the property (only once the holding fee has been paid) and any other viewings will be cancelled. These funds will be deducted from your move in monies (rent) once your application is approved.
4. You will then be passed to our friendly, Zest New Lets team, who will commence your referencing, application and contracts process. Please note, you risk forfeiting your holding deposit if you do not supply the required referencing information within 15 days from the initial request. If you are a Company then a Company Agency Fee will apply of £468. The deposit is usually equal to five week's rent. Deposits are protected with the Deposit Protection Service (DPS) and must be paid by the applicant and not a third party. Please ensure you provide references for employment, previous tenancies and, if self-employed, your latest set of company accounts to hand. If you do not meet the required salary limits (2.5 times the monthly rent) you will require a guarantor who is a UK home owner and able to cover your obligations. Alternatively, you can pay all of the rent in advance.
5. Pay your first month's rent before the start date of your tenancy. Rent is paid monthly at the advertised PCM figure. Bank transfers are accepted, but payment is not cleared until the funds are received into our client account.

ZEST PROPERTY SERVICES

1A MILE END
LONDON ROAD
BATH
BA1 6PT

T: 01225 48 10 10
E: HAPPYTOHELP@ZESTLOVESPROPERTY.COM

